

# Biotinylated Human BTLA Protein

Cat. No. BTL-HM401B

## Description

<b>Source</b>	Recombinant Biotinylated Human BTLA Protein is expressed from HEK293 with His tag and Avi tag at the C-Terminus. It contains Lys31-Ser150.
<b>Accession</b>	Q7Z6A9-1
<b>Molecular Weight</b>	The protein has a predicted MW of 16.7 kDa. Due to glycosylation, the protein migrates to 38-50 kDa based on Bis-Tris PAGE result.
<b>Endotoxin</b>	Less than 1EU per $\mu\text{g}$ by the LAL method.
<b>Purity</b>	> 95% as determined by Bis-Tris PAGE > 95% as determined by HPLC

## Formulation and Storage

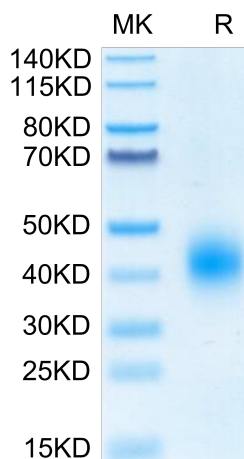
<b>Formulation</b>	Lyophilized from 0.22 $\mu\text{m}$ filtered solution in PBS (pH 7.4). Normally 8% trehalose is added as protectant before lyophilization.
<b>Reconstitution</b>	Centrifuge the tube before opening. Reconstituting to a concentration more than 100 $\mu\text{g}/\text{ml}$ is recommended. Dissolve the lyophilized protein in distilled water.
<b>Storage</b>	-20 to -80°C for 12 months as supplied from date of receipt. -80°C for 3 months after reconstitution. Recommend to aliquot the protein into smaller quantities for optimal storage. Please minimize freeze-thaw cycles.

## Background

B- and T-lymphocyte attenuator (BTLA; CD272) is a 35 kDa type I transmembrane glycoprotein in the CD28 family of T cell costimulatory molecules. BTLA is a inhibitory receptor on lymphocytes that negatively regulates antigen receptor signaling via PTPN6/SHP-1 and PTPN11/SHP-2. BTLA may interact in cis (on the same cell) or in trans (on other cells) with TNFRSF14.

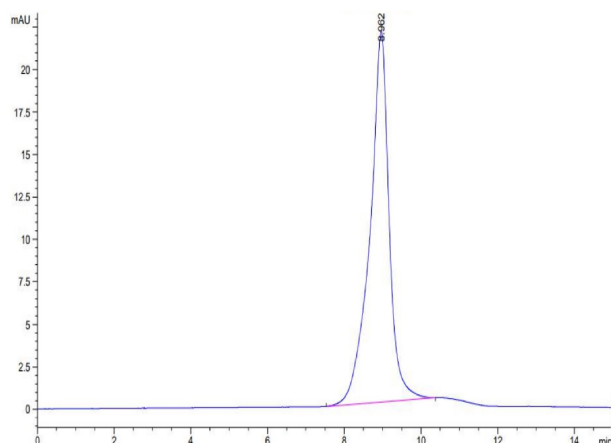
## Assay Data

### Bis-Tris PAGE



Biotinylated Human BTLA on Bis-Tris PAGE under reduced condition. The purity is greater than 95%.

### SEC-HPLC



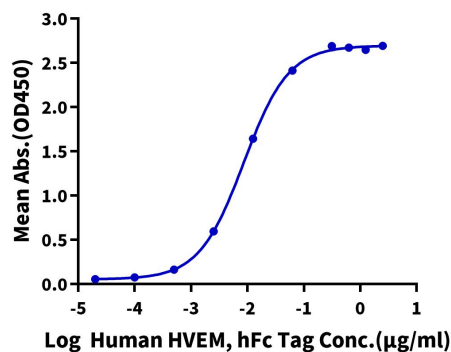
The purity of Biotinylated Human BTLA is greater than 95% as determined by SEC-HPLC

Assay Data

ELISA Data

**Biotinylated Human BTLA, His Tag ELISA**

0.2µg Biotinylated Human BTLA, His Tag Per Well

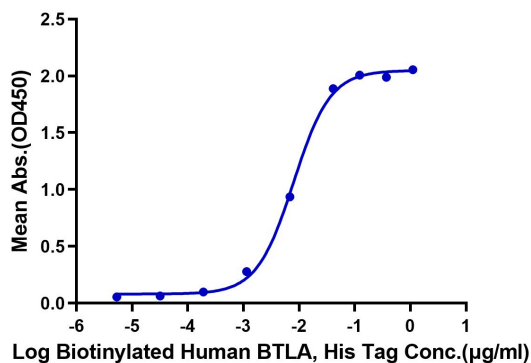


Immobilized Biotinylated Human BTLA, His Tag at 2µg/ml(100µl/well) on the streptavidin precoated plate (5µg/ml). Dose response curve for Human HVEM, hFc Tag with the EC50 of 8.6ng/ml determined by ELISA (QC Test).

ELISA Data

**Biotinylated Human BTLA, His Tag ELISA**

0.05µg Anti-BTLA antibody, hFc Tag Per Well



Immobilized Anti-BTLA Antibody, hFc Tag at 0.5µg/ml (100µl/well) on the plate. Dose response curve for Biotinylated Human BTLA, His Tag with the EC50 of 8.0ng/ml determined by ELISA.